

ITALY-3 CITY TOUR

LORENZO DE'MEDICI

Visit this university's website at: <http://www.lorenzodemedici.it/>

Rome

- ◆ Study in the heart of the "Eternal City" with over two millennia of history and cultural diversity
- ◆ Be immersed in Italy's political capital, with easy access to major sites such as The Vatican, the Coliseum, the Pantheon, and others!

Florence

- ◆ Over 350,000 people live in Florence – but some 6-7 million tourists visit each year.
- ◆ The birthplace of modern humanism, naturalistic arts, & scientific inquiry. The "Cradle of the Renaissance" is where Dante, Michelangelo, Leonardo da Vinci, Galileo, and Botticelli worked.

Tuscania

- ◆ Located on the borders of the Tuscany and Lazio regions of central Italy close to Rome and just south of Florence
- ◆ Known throughout history for its picturesque setting, dreamy landscapes, medieval walls, cobbled streets and fine culture and foods

Lorenzo De'Medici

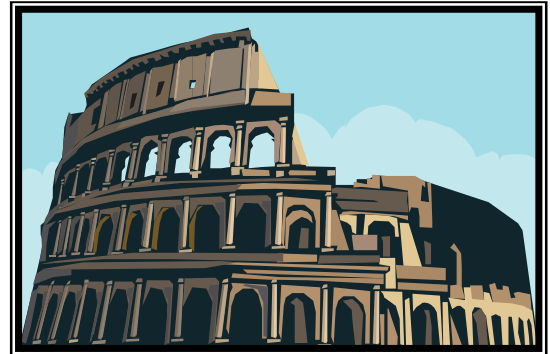
- ◆ Founded in 1973 with the Tuscania center opened in 2004 and the Rome center established in 2007
- ◆ The LdM facilities in all 3 cities have a full compliment of support staff that can meet all of the students' needs
- ◆ Students study in each city for one month, following the development of Greek, Etruscan, Roman, medieval and Renaissance cultures in Italy

Cost

- ◆ Please see program budget on the back of this flyer for estimated costs
- ◆ The estimated budget includes room & board, airfare, OISP* fees, ISU reduced tuition & insurance, International Student ID Card, local transportation, books & supplies, and personal expenses
- ◆ Financial aid is available to those who qualify. To make an appointment call 438-2231

Academic Programs

- ◆ Open to all majors, with many General Education courses
- ◆ Students are required to enroll in the appropriate level Italian language class, although no previous knowledge of Italian is needed
- ◆ Students will take 5 courses for 15 credit hours by studying a variety of subjects, such as Italian History, Art, Architecture, Philosophy, and Politics



Housing

- ◆ Student Apartments

Prerequisites

- ◆ Undergraduate students
- ◆ ISU Cum GPA of 2.5
- ◆ 2 semesters at ISU or other college/ university

Duration (Approximately)

Spring- February to May
Fall- August to December

Application Deadline

For Fall: 1st Monday in April
For Spring: 1st Monday in October

How To Apply

1. Make an appointment with a Study Abroad Advisor in OISP*, Fell Hall 308 (Ph: 438-5276)
2. Pick up a study abroad application form along with:
 - a) Faculty/Staff Recommendation
 - b) Course Placement Request Sheet
3. Make an appointment with your Academic Advisor—discuss your graduation needs & possible courses abroad
4. Make an appointment with the Financial Aid Office— if you qualify
5. Complete and turn in application along with all required material to Fell Hall 308 **before** the application deadline

Illinois State University
*Office of International Studies and Programs
Fell Hall 308
Normal, IL 61790-6120

Phone: 309-438-5276 Email: studyabroad@ilstu.edu
Website: <http://www.internationalstudies.ilstu.edu>

***Students who need accommodations based on a disability may contact 438-5853 or 438-8620 (TT/TDD).**